

TRUCKS AND BUSES



BUSINESS KA BADSHAH. TRUCK BHI. AAP BHI.

Eicher Pro 2075 CNG
The 7.49 Tonne GVW Truck



Mileage ka Badshah

EUTECH 6

EUTECH 6

Eicher is creating a new benchmark in the Indian commercial vehicle industry, with a revolutionary BSVI solution that combines global technology with innovative support services. This solution doesn't just make your vehicle BSVI compliant but ensures higher productivity of the truck and profitability of your business.



Euro VI Expertise for 6 years

VECV has been manufacturing and supplying base engines to the Volvo Group since 2013.
Over 1,00,000 Euro VI base engines supplied, operating in 41 countries.
First to rollout BS VI CV range in India, incorporating expertise of Euro VI technology.



Efficient CATCON and Auto M Booster Plus Technology

Reliable 3 Way catalytic Converter
Auto Mileage Booster for Auto De-acceleration Fuel Cut off
WISE Technology



Enhanced UPTIME

Eicher Uptime Centre for 24x7 support by specialists.
GPS enabled service vans just a phone call away.
Remote diagnostics for quick repair of BS VI vehicles.



FUEL EFFICIENT E483, 4 CYLINDER, 2 VALVE, 3.3 LITRE CNG ENGINE

MORE BUSINESS. MORE PROFIT.



Introducing Pro 2075 with proven E483 engine offering high payload, and lower maintenance cost. Its best-in-class mileage and revolutionary driver comfort puts it miles ahead of the closest competition & its next-gen technology will remain ahead of the curve for years to come. A new Badshah of the roads, the Pro 2075 promises to make you the Badshah of your business.



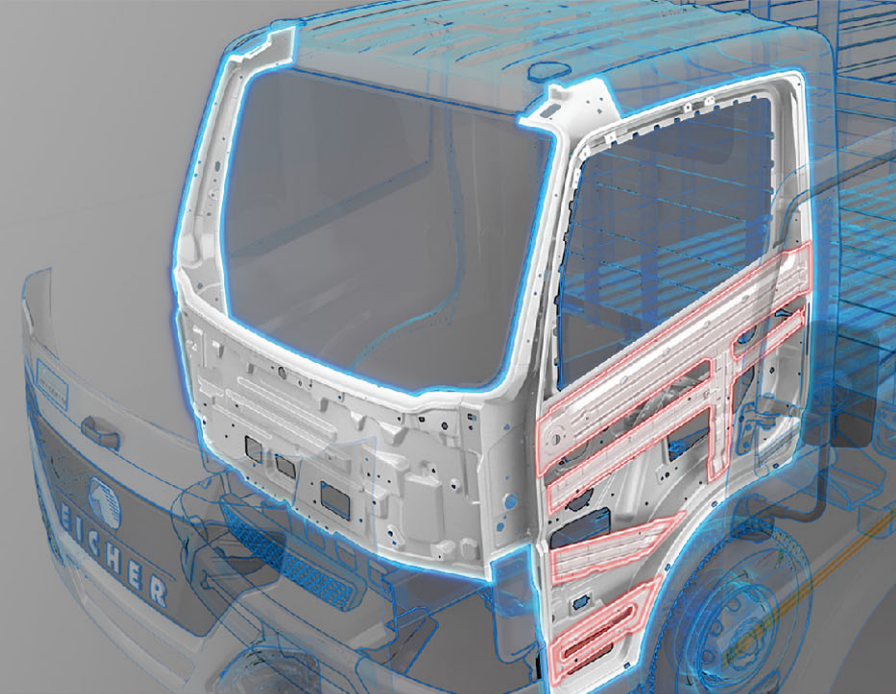
Mileage Ka Badshah.

- 1 » **Eicher E483**, 4 Cylinder high performance CNG engine.
- 2 » **Fuel Coaching** is a Driver's real time coach for improving fuel economy with dynamic Green band Zone which illuminates with right Speed and gears combination.
- 3 » **Auto M-Booster Plus Technology (Auto M-booster and WISE Technology).**
- 4 » **Auto Mileage Booster – Auto De-Acceleration Fuel Cut off.**

WISE Technology – » W- Wisdom of Auto Misfire detection.

» I - Intelligent Ambient temp adjustment.

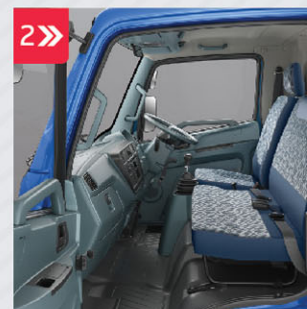
» SE - Smart Exhaust lambda sensors for mileage improvement.



1 »

Safety Ka Badshah.

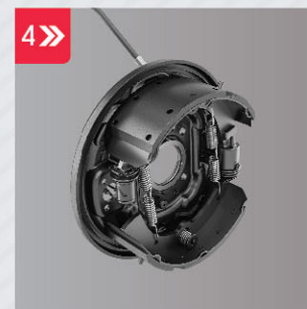
- 1 » Stronger and Sturdier Dual Panel Cabin that passes Pendulum test.
- 2 » 40% more survival space in roof, 75% in front collision.
- 3 » Boundary protected DRL Headlamps.
- 4 » Double diaphragm booster brake with bigger brake liner, bigger vacuum reservoir.



2 »



3 »

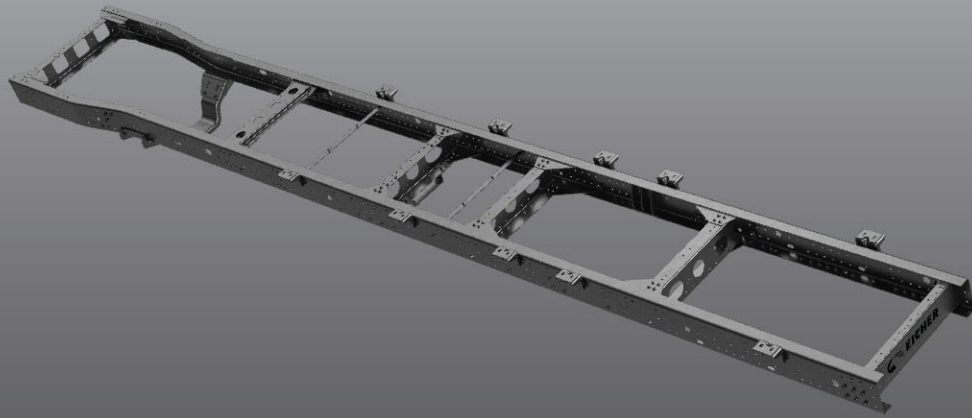


4 »

Reliability Ka Badshah.

- 1 » Domex 650 Chassis- high strength and more load carrying capacity
- 2 » Monotron propeller shaft, Grease free suspension, silent bushes, LOWEST maintenance.
- 3 » High strength advanced steel cargo body with increased corrugation depth and stronger tail gate.
- 4 » Standard helper suspension to support heavy city cargo applications.

1»



2»



3»



4»



1»



Comfort Ka Badshah.

- 1 » Comfortable 2m walk through cabin with lateral sleeping provision.
- 2 » Upto 10 degrees cooler cabin with heat insulation with best in class ambient noise reduction.
- 3 » Comfy2.0 seating design with detachable head rest, 180mm seat travel with lumbar support in thigh and back support.
- 4 » Bigger windshield, angular windows that let drivers see without obstruction and improves safety.

2»



3»



4»



Lifetime Support Solutions.

With our Lifetime Support Solutions, we ensure a seamless and hassle free experience from the time you consider buying an Eicher vehicle to the time you think of selling it. Our continuously improving and holistic services will ensure higher uptime and productivity for your BSVI vehicles.



Eicher has taken a step towards achieving Superior Uptime with a responsive attitude, that will set us apart and create a differentiated experience for our customer. With our new Uptime Center and Uptime Certified Workshops, we are now geared up with a proactive support system for diagnostic assistance with advanced diagnostic tools.



At Uptime Certified Workshops only
*T&C Apply

SPECIFICATIONS Eicher Pro 2075 CNG

GVW (kg)	7490	
Wheelbase (mm)	3770	3970
Cargo Body length (mm)	4938	5352
Cargo Body Width (mm)	2002	2002
Cargo body	CBC/HSD	
Engine	E483 BSVI CNG	
Max. Power Output	70 kW (~95 hp) @ 3100 rpm	
Max. Torque Output	245 Nm @ 1600	
Emission	BS VI	
Fuel	CNG	
Gearbox Type	Eicher 3M5D/ Eicher 35M5R	
Gear Shift	5 Speed with hybrid gear shift lever	
Clutch Dia (mm)	310	
Maximum Gradeability (%)	24	
Steering	Tilt and telescopic, Vacuum Assisted Standard Power Steering	
Turning Circle Diameter (m)	14.8	15.6
Ground Clearance (mm)	195	
Fuel Tank (Litres)	320	
Battery	12 V - 130 Ah	
Brakes	Hydraulic brakes (Drum)	
Suspension	Grease free Semi-elliptical laminated leaves (Front) Semi-Elliptic Laminated Leafs (With Helper Springs) Grooved Springs (Rear)	
Tyre Size	FR & RR: 7.50X16-16PR	
Cabin	New generation 2m tiltable cabin, Pegasus family look with eagle eyes, comfortable seating with multiple utility spaces.	

Applications



Fruits & Vegetables



Water Bottles



Milk



Parcel & Courier



Beverages



Grains & Cereals



FMCG



VE COMMERCIAL VEHICLES
A VOLVO GROUP AND EICHER MOTORS JOINT VENTURE
eichertrucksandbuses.com, Eicher Care: 1800 102 3531

VE COMMERCIAL VEHICLES LTD.
Registered Address – 3rd Floor Select Citywalk,
A -3 District Centre, Saket, New Delhi 110 107, India.
CIN – U74900DL2008PLC175032

CORPORATE ADDRESS
Eicher Trucks & Buses
#96, Sector – 32, Gurgaon
122001, Haryana, India.

Caution: *Do not weld or drill on chassis frame. *Accessories, colours and features shown in pictures or elsewhere may not constitute standard fitment. *Weight mentioned is for standard configuration with standard body sizes and will change due to optional fitments. *As a result of continuous research and innovation carried out, specifications are merely indicative and are subject to change without notice.