

TRUCKS AND BUSES



BUSINESS KA BADSHAH. TRUCK BHI. AAP BHI.

Eicher Pro 2090
The 8.99 Tonne GVW Truck



Mileage ka Badshah

↑ UTECH 6

EUTECH 6

Eicher is creating a new benchmark in the Indian commercial vehicle industry, with a revolutionary BS VI solution that combines global technology with innovative support services. This solution doesn't just make your vehicle BS VI compliant but ensures higher productivity of the truck and profitability of your business.



Euro VI Expertise for 6 years

VECV has been manufacturing and supplying base engines to the Volvo Group since 2013. Over 1,00,000 Euro VI base engines supplied, operating in 41 countries. First to rollout BS VI CV range in India, incorporating expertise of Euro VI technology.



Efficient EATS and engine technology

Best fluid economy: Lower fuel consumption + DEF consumption combined. Reliable EATS + engine technology tested for over 56,00,000 km. Duty cycle based SCR for high reliability & low maintenance.



Enhanced UPTIME

Eicher Uptime Centre for 24x7 support by specialists. GPS enabled service vans just a phone call away. Remote diagnostics for quick repair of BS VI vehicles.



FUEL EFFICIENT E474 ENGINE: 4 CYLINDER, 4 VALVE 3 LITRE CRS ENGINE

MORE BUSINESS. MORE PROFIT.

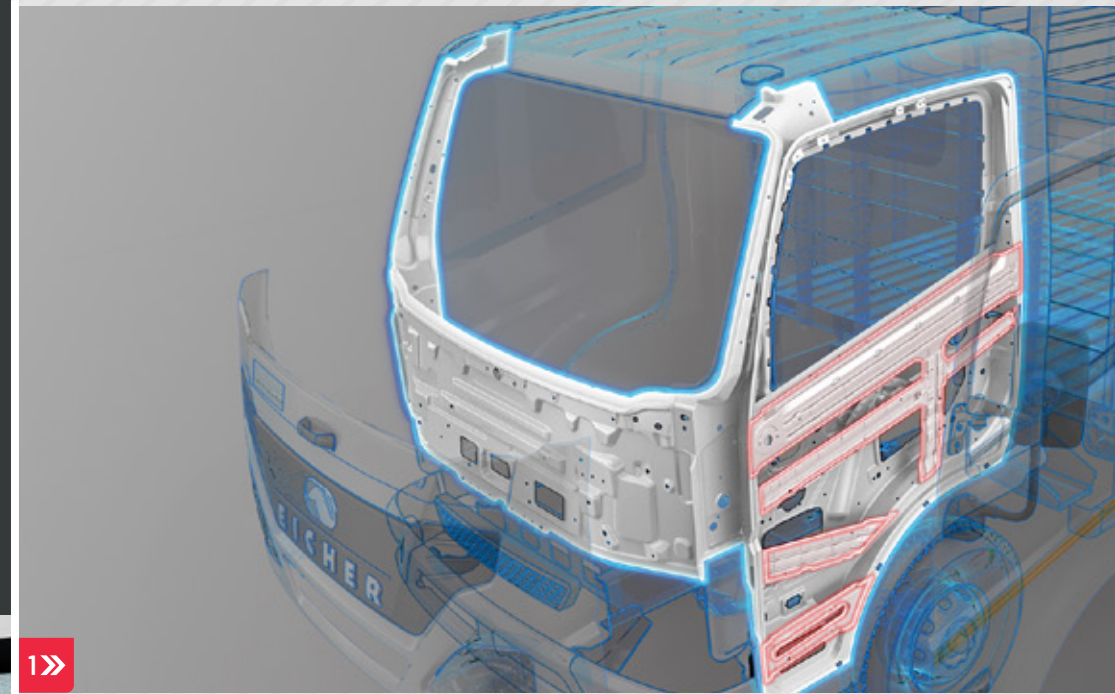


Introducing Pro 2090 Diesel with E474 CRS engine & 5 speed gearbox. Its best-in-class mileage and revolutionary driver comfort puts it miles ahead of the closest competition & its next-gen technology will remain ahead of the curve for years to come. A new Badshah of the roads, the Pro 2090 promises to make you the Badshah of your business.



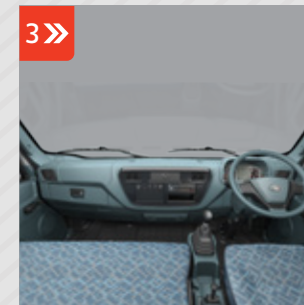
Mileage Ka Badshah.

- 1» Eicher E474 4 Valve DOHC CRS Engine with industry best flat torque range.
- 2» **M Booster+** helps to get Best in class mileage with different payload selections with Power, Eco and Eco+ mode.
- 3» **Fuel Coaching** is a Driver's real time coach for improving fuel economy with dynamic Green band Zone which illuminates with right Speed and gears combination.
- 4» **Cruise Control** provides a fatigue free driving experience by maintaining speed without pressing pedal and helps improve mileage.



Safety Ka Badshah.

- 1» Stronger and Sturdier Dual Panel Cabin that passes vehicle Crash Test.
- 2» Foot rest inside the door for dust & water protection.
- 3» Enhanced outside visibility for driver-bigger windshield, angular windows, better rear view via mirrors.
- 4» High Wattage DRL Headlamps with twin reflectors.



Reliability Ka Badshah.

- 1» High strength stronger cargo body with more corrugation depth, strengthened columns and stronger tail gate.
- 2» Lifetime maintenance free Monotron propeller shaft.
- 3» Grease Free Semi-elliptical Suspension.
- 4» Stronger and Rugged Domex 650 chassis with high yield strength.

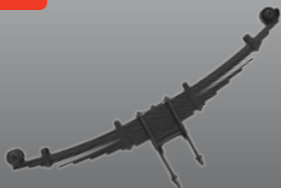
1»



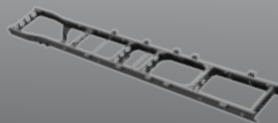
2»



3»



4»



1»



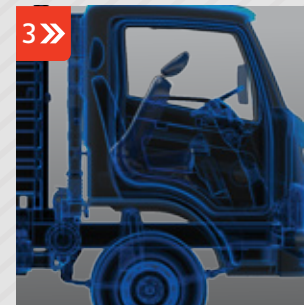
Comfort Ka Badshah.

- 1» 10 degree cooler cabin & most silent cabin in category.
- 2» 4-Stage High Speed Blower for comfortable journeys.
- 3» Most comfortable seating (105 degree tilting, 180 mm seat travel, lumbar support, lateral sleeping).
- 4» Walk through cabin.

2»



3»

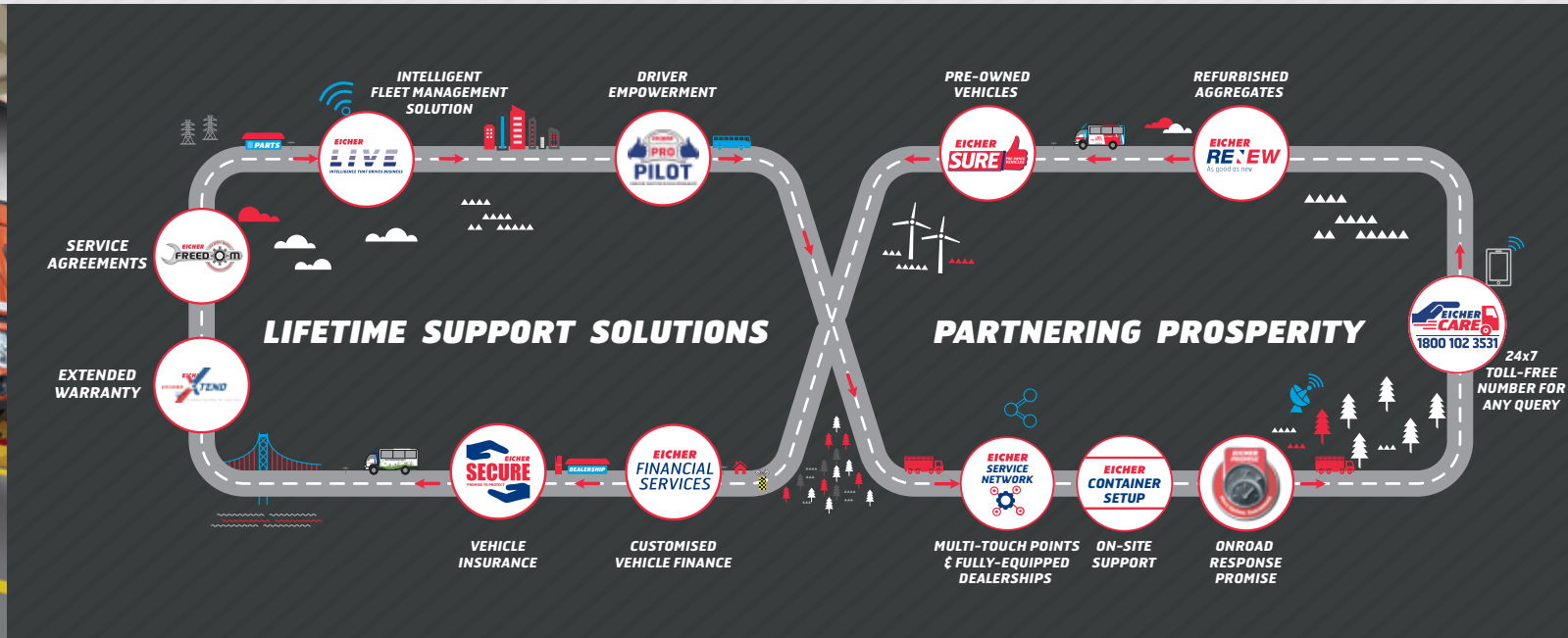


4»



Lifetime Support Solutions.

With our Lifetime Support Solutions, we ensure a seamless and hassle free experience from the time you consider buying an Eicher vehicle to the time you think of selling it. Our holistic and continuously improving services will also ensure higher uptime and productivity for your BS VI vehicles.



Eicher has taken a step towards achieving Superior Uptime with a responsive attitude, that will set us apart and create a differentiated experience for our customer. With our new Uptime Center and Uptime Certified Workshops, we are now geared up with a proactive support system for diagnostic assistance with advanced diagnostic tools.



SPECIFICATIONS Eicher Pro 2090

GVW (kg)	8990	
Wheelbase (mm)	3370	3770
Cargo body length (mm)	4327	4941
Cargo Body width (mm)	2002	2002
Engine	E474 Turbocharged Intercooled CRS	
Power	120 hp	
Torque	350 Nm @ 1200-2500 rpm	
Transmission	EICHER 35M5R	
Gear Type	5 Speed with hybrid gear shift lever	
Clutch Dia (mm)	310	
Gradeability (%)	26	
Steering	Tilt and telescopic, vacuum assisted standard power Steering	
Ground Clearance (mm)	195	
Turning Circle Diameter (m)	13.3	14.8
Battery	12 V - 100 Ah	
Fuel Tank (Litres)	190 (Anti- corrosive composite HDP polymer)	
Brakes (Service)	Hydraulic brakes (Drum)	
Suspension	Grease free semi elliptical suspension with shock absorber at front	
Tyre Size	7.50X16-16PR	
Cabin	New generation 2m tiltable cabin, Pegasus family look with eagle eyes, comfortable seating with multiple utility spaces	

Applications



Fruits & Vegetables



Auto Components



Poultry



Cement



FMCG



White Goods



Beverages



Parcel & Courier



VE COMMERCIAL VEHICLES
A VOLVO GROUP AND EICHER MOTORS JOINT VENTURE
eichertrucksandbuses.com, Eicher Care- 1800 102 3531

VE COMMERCIAL VEHICLES LTD.
Registered Address – 3rd Floor Select Citywalk ,
A -3 District Centre, Saket, New Delhi 110 107, India
CIN – U74900DL2008PLC175032

CORPORATE ADDRESS
Eicher Trucks & Buses
#96, Sector – 32, Gurgaon
122001, Haryana, India

Caution: *do not weld or drill on chassis frame. *Accessories, colours and features shown in pictures or elsewhere may not constitute standard fitment. *Weight mentioned is for standard configuration with standard body sizes and will change due to optional fitments. *as a result of continuous research and innovation carried out, specifications are merely indicative and are subject to change without notice.