

TRUCKS AND BUSES



BUSINESS KA BADSHAH. TRUCK BHI. AAP BHI.

Eicher Pro 2095XP CNG
The 11.1 Tonne GVW Truck



Mileage ka Badshah

EUTECH 6

EUTECH 6

Eicher is creating a new benchmark in the Indian commercial vehicle industry, with a revolutionary BSVI solution that combines global technology with innovative support services. This solution doesn't just make your vehicle BSVI compliant but ensures higher productivity of the truck and profitability of your business.



Euro VI Expertise for 6 years

VECV has been manufacturing and supplying base engines to the Volvo Group since 2013.
Over 1,00,000 Euro VI base engines supplied, operating in 41 countries.
First to rollout BS VI CV range in India, incorporating expertise of Euro VI technology.



Efficient CATCON and Auto M Booster Plus Technology

Reliable 3 Way catalytic Converter
Auto Mileage Booster for Auto De-acceleration Fuel Cut off
WISE Technology



Enhanced UPTIME

Eicher Uptime Centre for 24x7 support by specialists.
GPS enabled service vans just a phone call away.
Remote diagnostics for quick repair of BS VI vehicles.



FUEL EFFICIENT E483, 4 CYLINDER, 2 VALVE, 3.3 LITRE CNG ENGINE

MORE BUSINESS. MORE PROFIT.



Introducing Pro 2095XP with proven E483 engine delivering high engine powers of 95hp and 115hp and industry's highest CNG capacity across 17.6ft, 20ft and 21.8ft cargo body options. Pro 2095XP it is all set to take your profitability to newer heights. Its best-in-class mileage and revolutionary driver comfort puts it miles ahead of the closest competition & its next-gen technology will remain ahead of the curve for years to come. A new Badshah of the roads, the Pro 2095XP promises to make you the Badshah of your business.



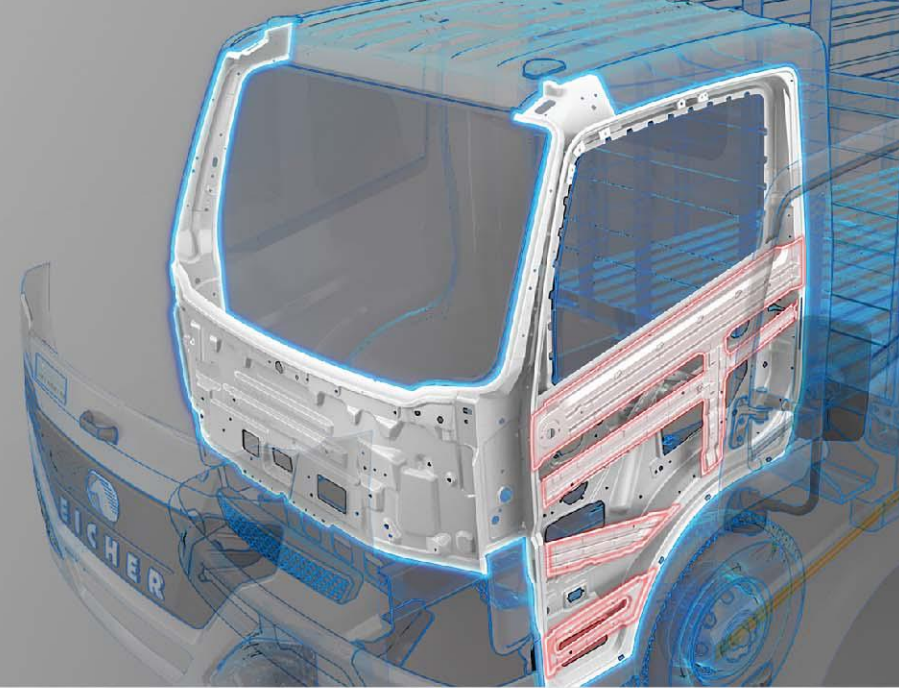
Mileage Ka Badshah.

- 1 » **Eicher E483**, 4 Cylinder high performance CNG engine.
- 2 » **Fuel Coaching** is a Driver's real time coach for improving fuel economy with dynamic Green band Zone which illuminates with right Speed and gears combination.
- 3 » **Auto M-Booster Plus Technology (Auto M-booster and WISE Technology).**
- 4 » **Auto Mileage Booster – Auto De-Acceleration Fuel Cut off.**

WISE Technology –» W- Wisdom of Auto Misfire detection.

» I - Intelligent Ambient temp adjustment.

» SE - Smart Exhaust lambda sensors for mileage improvement.



1 »

Safety Ka Badshah.

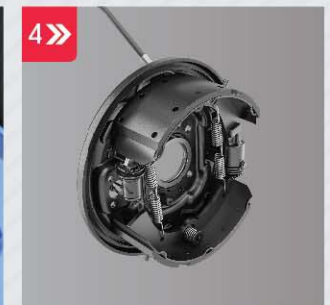
- 1 » Stronger and Sturdier Dual Panel Cabin that passes Pendulum test.
- 2 » 40% more survival space in roof, 75% in front collision.
- 3 » Boundary protected DRL Headlamps.
- 4 » Double diaphragm booster brake with bigger brake liner, bigger vacuum reservoir.



2 »



3 »

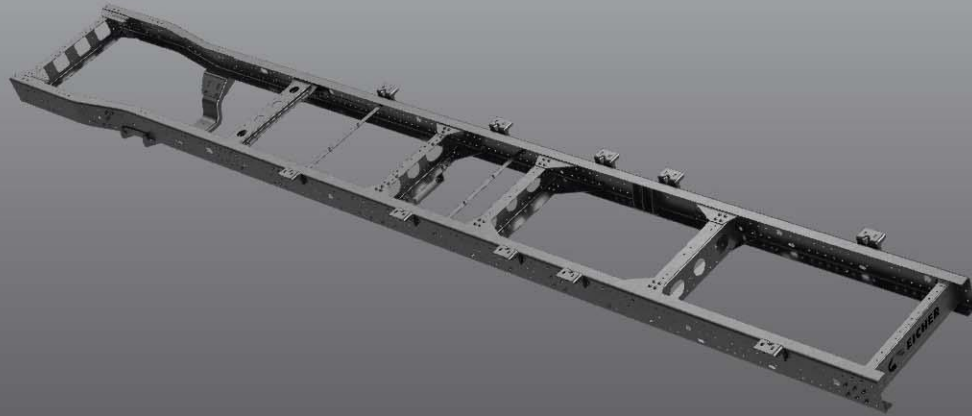


4 »

Reliability Ka Badshah.

- 1 » Domex 650 Chassis- high strength and more load carrying capacity
- 2 » Monotron propeller shaft, Grease free suspension, silent bushes, LOWEST maintenance.
- 3 » High strength advanced steel cargo body with increased corrugation depth and stronger tail gate.
- 4 » Standard helper suspension to support heavy city cargo applications.

1 »



2 »



3 »



4 »



1 »



Comfort Ka Badshah.

- 1 » Comfortable 2m walk through cabin with lateral sleeping provision.
- 2 » Upto 10 degrees cooler cabin with heat insulation with best in class ambient noise reduction.
- 3 » Comfy2.0 seating design with detachable head rest, 180mm seat travel with lumbar support in thigh and back support.
- 4 » Bigger windshield, angular windows that let drivers see without obstruction and improves safety.

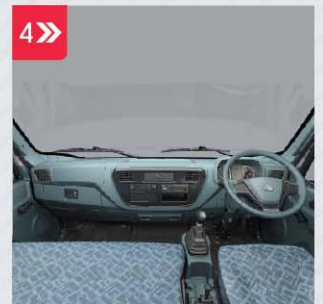
2 »



3 »



4 »



Lifetime Support Solutions.

With our Lifetime Support Solutions, we ensure a seamless and hassle free experience from the time you consider buying an Eicher vehicle to the time you think of selling it. Our continuously improving and holistic services will ensure higher uptime and productivity for your BSVI vehicles.



Eicher has taken a step towards achieving Superior Uptime with a responsive attitude, that will set us apart and create a differentiated experience for our customer. With our new Uptime Center and Uptime Certified Workshops, we are now geared up with a proactive support system for diagnostic assistance with advanced diagnostic tools.



At Uptime Certified Workshops only
*T&C Apply

SPECIFICATIONS Eicher Pro 2095XP CNG

GVW (kg)	11100		
Wheelbase (mm)	3970	4420	4770
Cargo Body length (mm)	5352	6110	6632
Cargo Body Width (mm)	2122	2122	2002
Engine	E483 BSVI CNG		
Max. Power Output	70 kW (~95hp) @ 3100 rpm & 85 kW (~115hp) @ 2600 rpm		
Max. Torque Output	245 Nm @ 1600 & 360 Nm @ 1600-2000 rpm		
Emission	BS VI		
Fuel	CNG		
Gearbox Type	Eicher 3M5D/ Eicher 35M5R		
Gear Shift	5 Speed with hybrid gear shift lever		
Clutch Dia (mm)	310		
Maximum Gradeability (%)	24		
Steering	Tilt and telescopic, Vacuum Assisted Standard Power Steering		
Turning Circle Diameter (m)	15.6	17.4	18.7
Ground Clearance (mm)	195		
Fuel Tank (Litres)	445	495	495
Battery	12 V - 130 Ah		
Brakes	Air brakes (Drum)		
Suspension	Grease free Semi-elliptical laminated leaves (Front) Semi-elliptic Laminated Leafs (With Helper Springs) Grooved Springs (Rear)		
Tyre Size	8.25x16-16PR		
Cabin	New generation 2m tiltable cabin, Pegasus family look with eagle eyes, comfortable seating with multiple utility spaces.		

Applications



Fruits & Vegetables



Cement



Poultry



Industrial goods



FMCG



White goods



Beverages



Parcel & Courier



Auto Components



VE COMMERCIAL VEHICLES
A VOLVO GROUP AND EICHER MOTORS JOINT VENTURE
eichertrucksandbuses.com, Eicher Care: 1800 102 3531

VE COMMERCIAL VEHICLES LTD.
Registered Address – 3rd Floor Select Citywalk,
A -3 District Centre, Saket, New Delhi 110 107, India.
CIN – U74900DL2008PLC175032

CORPORATE ADDRESS
Eicher Trucks & Buses
#96, Sector – 32, Gurgaon
122001, Haryana, India.

Caution: *Do not weld or drill on chassis frame. *Accessories, colours and features shown in pictures or elsewhere may not constitute standard fitment. *Weight mentioned is for standard configuration with standard body sizes and will change due to optional fitments. *As a result of continuous research and innovation carried out, specifications are merely indicative and are subject to change without notice.