

TRUCKS AND BUSES



# BUSINESS KA BADSHAH. TRUCK BHI. AAP BHI.

Eicher Pro 2110  
The 11.9 Tonne GVW Truck



Mileage ka Badshah

↑  
EUTECH 6

# EUTECH 6

Eicher is creating a new benchmark in the Indian commercial vehicle industry, with a revolutionary BS VI solution that combines global technology with innovative support services. This solution doesn't just make your vehicle BS VI compliant but ensures higher productivity of the truck and profitability of your business.



## Euro VI Expertise for 6 years

VECV has been manufacturing and supplying base engines to the Volvo Group since 2013. Over 1,00,000 Euro VI base engines supplied, operating in 41 countries. First to rollout BS VI CV range in India, incorporating expertise of Euro VI technology.



## Efficient EATS and engine technology

Best fluid economy: Lower fuel consumption + DEF consumption combined. Reliable EATS + engine technology tested for over 56,00,000 km. Duty cycle based SCR for high reliability & low maintenance.



## Enhanced UPTIME

Eicher Uptime Centre for 24x7 support by specialists. GPS enabled service vans just a phone call away. Remote diagnostics for quick repair of BS VI vehicles.



**FUEL EFFICIENT E494, 4 CYLINDER, 4 VALVE, 3.8 LITRE CRS ENGINE**

# Redefining Profits with 7 Speed



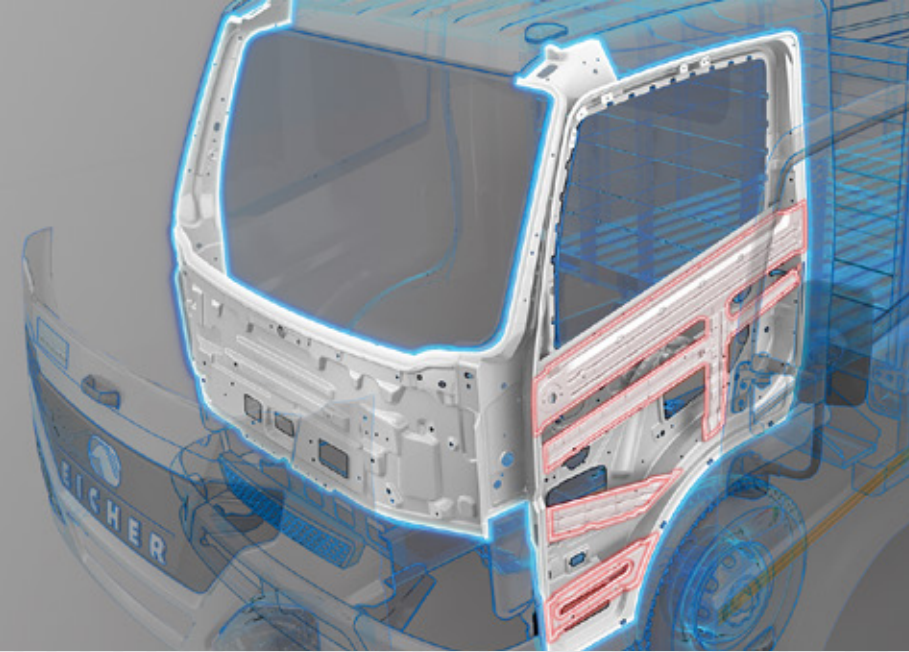
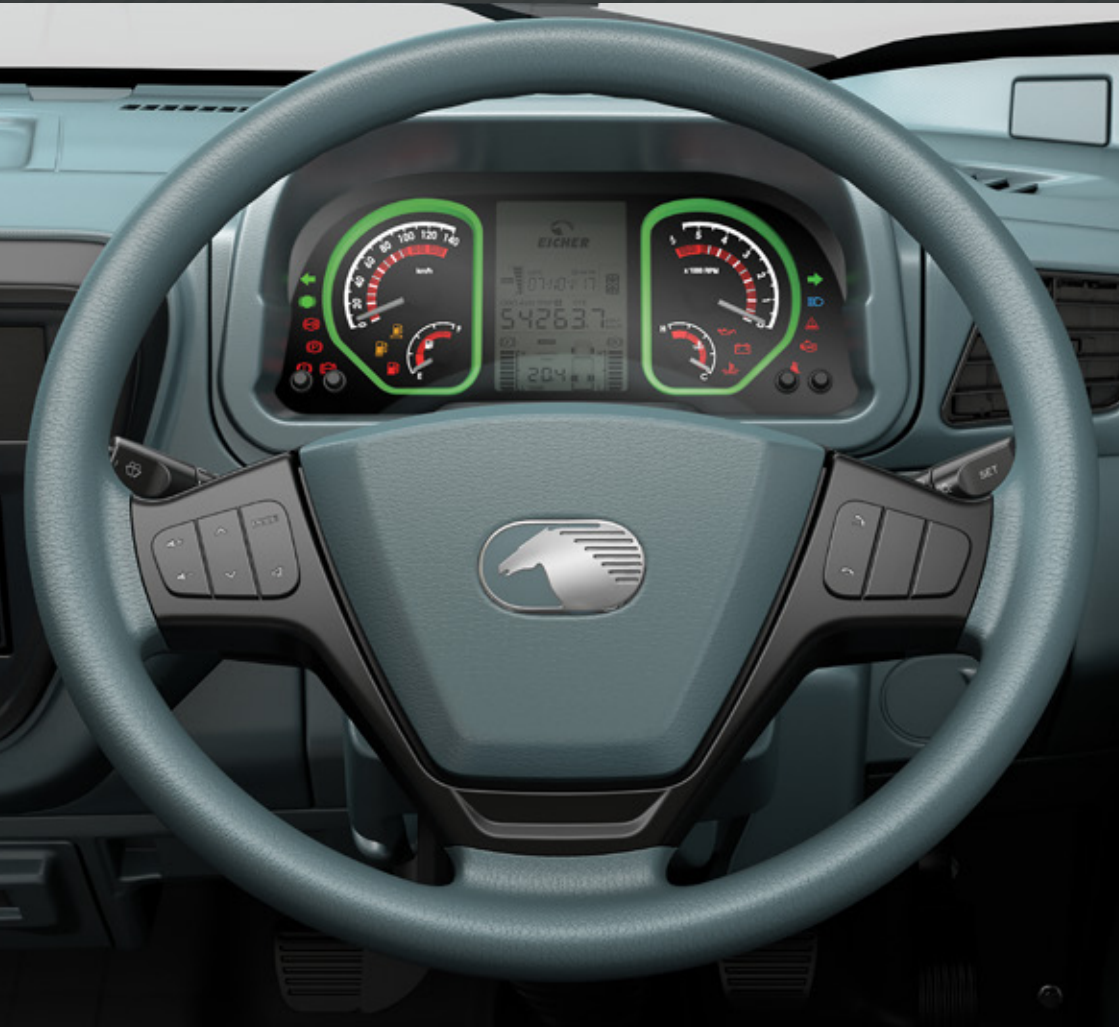
Introducing Eicher Pro 2110 with E494 engine & 7-Speed gearbox. Its best-in-class mileage and revolutionary driver comfort puts it miles ahead of the closest competitor & its next-generation technology will remain ahead of the curve for years to come. A new Badshah of the roads, the Eicher Pro 2110 promises to make you a Badshah of your business.





# Mileage Ka Badshah.

- 1 » **Eicher E494**, 4 Cylinder high performance CRS engine with 7-Speed gearbox.
- 2 » **M Booster+** helps to get Best in class mileage with different payload selections with Power, Eco and Eco+ mode
- 3 » **Fuel Coaching** is a Driver's real time coach for improving fuel economy with dynamic Green band Zone which illuminates with right Speed and gears combination
- 4 » **Cruise Control** provides a fatigue free driving experience by maintaining speed without pressing pedal and helps improve mileage



1 »

# Safety ka Badshah.

- 1 » Stronger and sturdier Dual panel cabin that passes Pendulum Test.
- 2 » Fog lamps for enhanced visibility for the driver.
- 3 » Foot rest inside the door for dust and water protection.
- 4 » High wattage DRL Headlamps with twin reflectors.

2 »



3 »

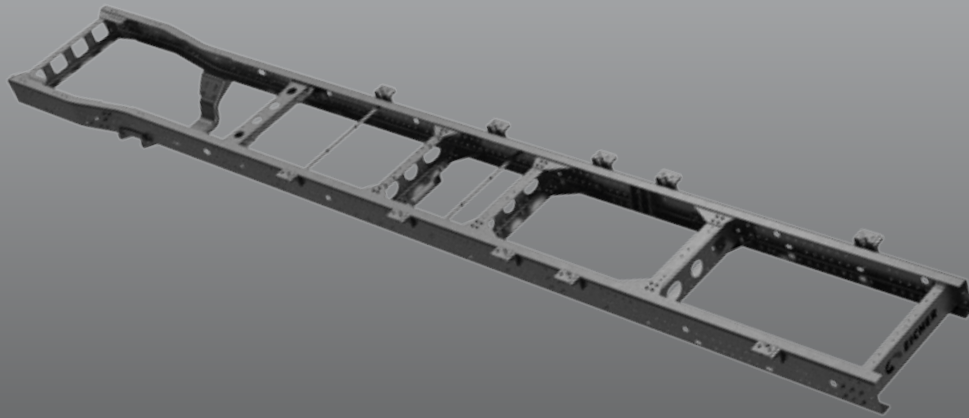


4 »



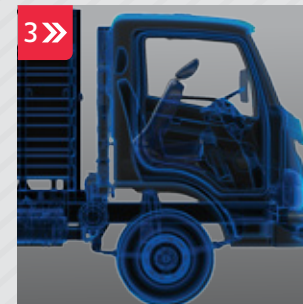
# Reliability ka Badshah.

- 1 » Stronger and rugged Domex chassis with high tensile strength.
- 2 » Lifetime maintenance free Monotron propeller shaft.
- 3 » Stronger cargo body with strengthened columns and tail gate.
- 4 » Boundary protected DRL Headlamps.



# Comfort ka Badshah.

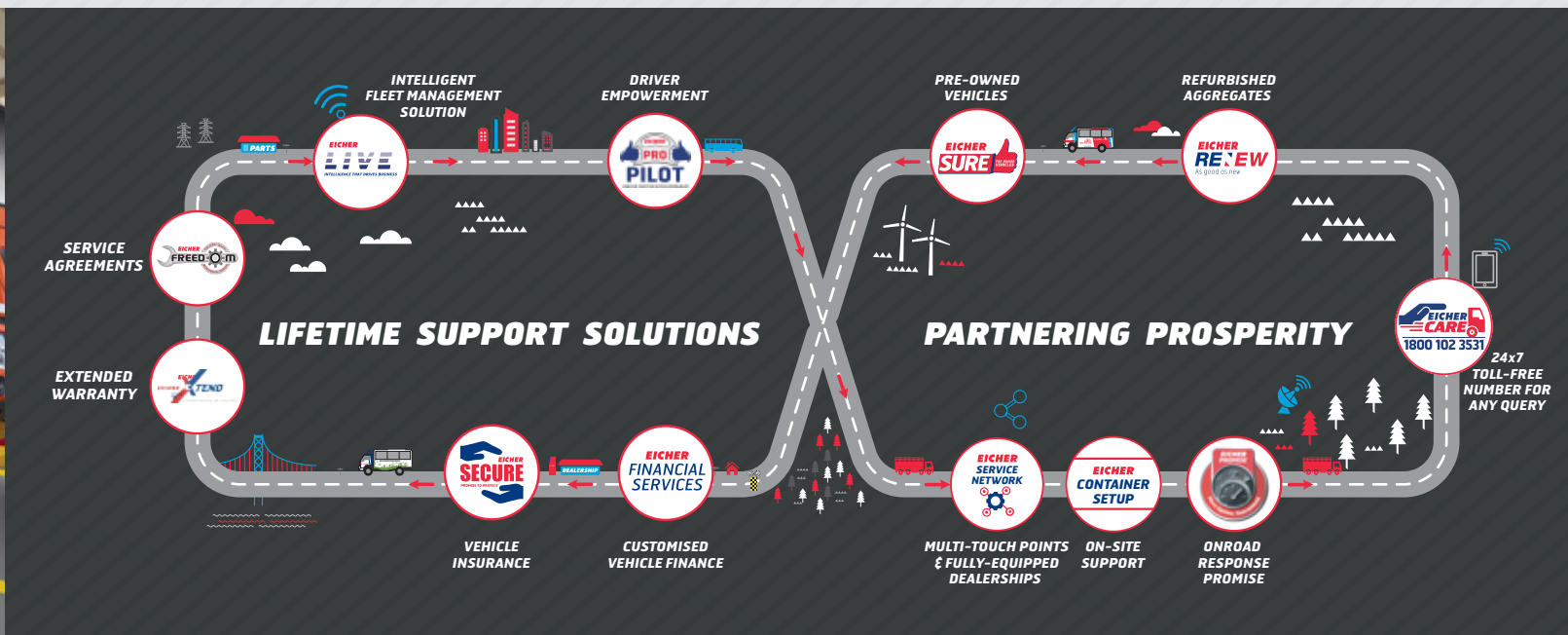
- 1 » 8 degree cooler cabin & 65dB noise level.
- 2 » Walk through cabin.
- 3 » 105 degree seat tilting, industry best seat travel of 180 mm, and adjustable seats.
- 4 » Better utilities: Bottle Holder, Mobile Holder and Music system.





# Lifetime Support Solutions.

With our Lifetime Support Solutions, we ensure a seamless and hassle free experience from the time you consider buying an Eicher vehicle to the time you think of selling it. Our holistic and continuously improving services will also ensure higher uptime and productivity for your BS VI vehicles.



Eicher has taken a step towards achieving Superior Uptime with a responsive attitude, that will set us apart and create a differentiated experience for our customer. With our new Uptime Center and Uptime Certified Workshops, we are now geared up with a proactive support system for diagnostic assistance with advanced diagnostic tools.



At Uptime Certified Workshops only  
\*T&C Apply

## SPECIFICATIONS

## Eicher Pro 2110

GVW (kg)	11990				
Wheelbase (mm)	3900	4300		5150	
Cargo Body Length (mm)	5252	5804	6101	6777	7360
Cargo Body Width (mm)	2125				2287
Engine	E494 4V TCI BS VI (CRS diesel engine)				
Max. power output	160 hp @ 2600 rpm				
Max. torque output	500 Nm @ 1200-1800 rpm				
Transmission	ET50S7				
Gear type	7-Speed: 7F (2 overdrive gears) + 1R				
Clutch diameter (mm)	330				
Gradeability (%)	30				
Steering	Tilt and telescopic standard power steering				
Turning circle diameter (m)	15.5	16.8	16.8	20	20
Ground clearance (mm)	250				
Battery	12V - 100 Ah				
Fuel tank capacity (Litres)	Anti-corrosive composite HDPE polymer-190, (5252, 5804, 6101, 6777 mm), 425 (7360mm)				
Brakes	Air brake (Drum)				
Suspension	Semi elliptical laminated leaves with helper				
Tyre size	8.25X20 standard nylon tyres				
Cabin	2m wide tiltable cabin. Pegasus family look with eagle eyes. New interiors with extra utility features.				



**VE COMMERCIAL VEHICLES**  
A VOLVO GROUP AND EICHER MOTORS JOINT VENTURE  
eichertrucksandbuses.com, Eicher Care: 1800 102 3531

VE COMMERCIAL VEHICLES LTD.  
Registered Address – 3rd Floor Select Citywalk,  
A -3 District Centre, Saket, New Delhi 110 107, India.  
CIN – U74900DL2008PLC175032

## Unique Features



7-Speed gearbox



Cruise control



M-Booster+

## Applications



Fruits &  
Vegetables



Cement



Fish



Industrial  
goods



FMCG



White goods



Beverages



Parcel & Courier



Grains & Cereals

CORPORATE ADDRESS  
Eicher Trucks & Buses  
#96, Sector – 32, Gurgaon  
122001, Haryana, India.

Caution: \*Do not weld or drill on chassis frame. \*Accessories, colours and features shown in pictures or elsewhere may not constitute standard fitment. \*Weight mentioned is for standard configuration with standard body sizes and will change due to optional fitments. \*As a result of continuous research and innovation carried out, specifications are merely indicative and are subject to change without notice.