

TRUCKS AND BUSES



BUSINESS KA BADSHAH. TRUCK BHI. AAP BHI.

Eicher Pro 2110XP Plus CNG
The 14 Tonne GVW Truck



Mileage ka Badshah

EUTECH 6

Eicher is creating a new benchmark in the Indian commercial vehicle industry, with a revolutionary BSVI solution that combines global technology with innovative support services. This solution doesn't just make your vehicle BSVI compliant but ensures higher productivity of the truck and profitability of your business.

EXTRA PAYLOAD FOR EXTRA PROFITS.



Introducing Eicher Pro 2110XP Plus 14 Tonne GVW CNG Truck, best suited for intracity and intercity movements. This heavy-duty truck delivers goods on time with best-in-class payload, mileage and lowest maintenance, truly making it the Mega City Badshah. The Pro 2110XP Plus CNG, an environment friendly truck, promises to make you the Badshah of your business with maximum green profitability.



Euro VI Expertise for 6 years

VECV has been manufacturing and supplying base engines to the Volvo Group since 2013.
Over 1,00,000 Euro VI base engines supplied, operating in 41 countries.
First to rollout BS VI CV range in India, incorporating expertise of Euro VI technology.



Efficient CATCON and Auto M Booster Plus Technology

Reliable 3 Way catalytic Converter
Auto Mileage Booster for Auto De-acceleration Fuel Cut off
WISE Technology



Enhanced UPTIME

Eicher Uptime Centre for 24x7 support by specialists.
GPS enabled service vans just a phone call away.
Remote diagnostics for quick repair of BS VI vehicles.



EICHER E494 4 CYLINDER HIGH PERFORMANCE CNG ENGINE WITH 7 SPEED GEAR BOX



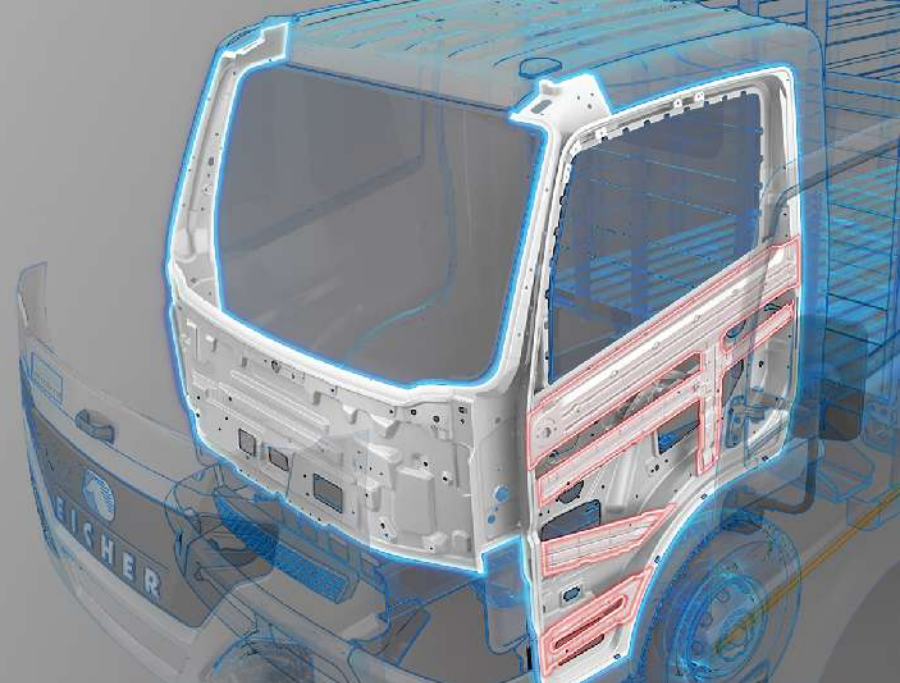
Mileage Ka Badshah.

- 1 » Eicher E494, 4 Cylinder high performance CNG engine with 7-Speed gearbox.
- 2 » **Fuel Coaching** is a Driver's real time coach for improving fuel economy with dynamic Green band Zone which illuminates with right Speed and gears combination.
- 3 » **Auto M-Booster Plus Technology (Auto M-booster and WISE Technology).**
- 4 » **Auto Mileage Booster – Auto De-Acceleration Fuel Cut off.**

WISE Technology – » W - Wisdom of Auto Misfire detection.

» I - Intelligent Ambient temp adjustment.

» SE - Smart Exhaust lambda sensors for mileage improvement.



1 »

Safety Ka Badshah.

- 1 » Dual panel stronger and sturdier cabin.
- 2 » High wattage DRL headlamps and Fog lamps for enhanced outside visibility for driver.
- 3 » Foot rest inside the door for dust and water protection.
- 4 » Imported quality stainless steel made tubes and fittings for zero risk.

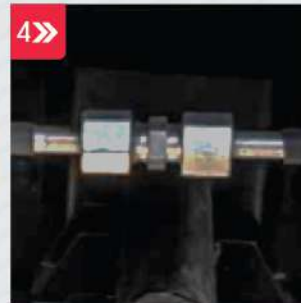
2 »



3 »



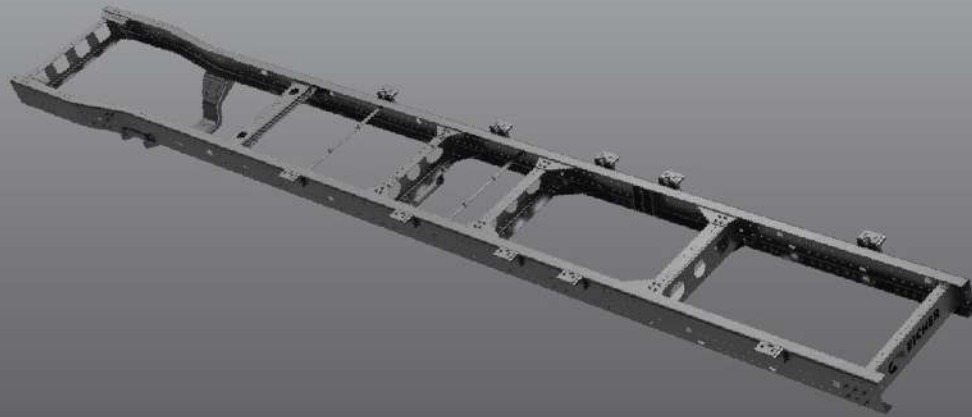
4 »



Reliability Ka Badshah.

- 1» Stronger and Rugged Domex chassis with high tensile strength.
- 2» Lifetime maintenance free Monotron propeller shaft.
- 3» High strength stronger cargo body with strengthened columns and stronger tail gate.
- 4» Fault detection for CATCON, improves life of CATCON.

1»



2»



3»



4»



1»



Comfort Ka Badshah.

- 1» 8 degree cooler cabin & 65dB noise level.
- 2» Walk through cabin.
- 3» 105 degree seat tilting, industry best seat travel of 180 mm, and adjustable seats.
- 4» Better utilities: Bottle Holder, Mobile Holder and Music system.

2»



3»



4»



Lifetime Support Solutions.

With our Lifetime Support Solutions, we ensure a seamless and hassle free experience from the time you consider buying an Eicher vehicle to the time you think of selling it. Our continuously improving and holistic services will ensure higher uptime and productivity for your BSVI vehicles.



Eicher has taken a step towards achieving Superior Uptime with a responsive attitude, that will set us apart and create a differentiated experience for our customer. With our new Uptime Center and Uptime Certified Workshops, we are now geared up with a proactive support system for diagnostic assistance with advanced diagnostic tools.



At Uptime Certified Workshops only
*T&C Apply

SPECIFICATIONS Eicher Pro 2110XP Plus CNG

GVW (kg)	14052		
Wheelbase (mm)	4300	4300	5150
Cargo Body length (mm)	5804	6101	7360
Cargo Body Width (mm)	2125	2125	2287
Engine	E494 TCIC CNG 100 kW BSVI		
Max. Power Output	100 kW (~135 hp) @ 2400 rpm		
Max. Torque Output	450 Nm @ 1400-2000 rpm		
Emission	BS VI		
Fuel	CNG		
Gearbox Type	ET 50S7		
Gear Shift	7 Speed with hybrid gear shift lever		
Clutch Dia (mm)	330		
Gradeability (%)	25		
Steering	Tilt and telescopic, vacuum assisted standard power steering		
Turning Circle Diameter (m)	16.8	16.8	19.8
Ground Clearance (mm)	250		
Fuel Tank (Litres)	470	470	565
Battery	12 V-100 Ah		
Brakes	Air brakes (Drum)		
Suspension	Front - Semi-Elliptic Laminated Leafs(With shock Absorbers) Rear - Semi elliptical laminated leaves with helper spring		
Tyre Size	FR & RR: 8.25R20		
Cabin	2 m wide tiltable cabin		

Unique Features



7-Speed gearbox



10 Tonne Hydraulic jack



Auto M-Booster+

Applications



Fruits & Vegetables



Beverages



Parcel & Courier



Market load



White goods



Food grains



Refrigerated container



CNG cascade



LPG



VE COMMERCIAL VEHICLES
A VOLVO GROUP AND EICHER MOTORS JOINT VENTURE
eichertrucksandbuses.com, Eicher Care: 1800 102 3531

VE COMMERCIAL VEHICLES LTD.
Registered Address – 3rd Floor Select Citywalk,
A -3 District Centre, Saket, New Delhi 110 107, India.
CIN – U74900DL2008PLC175032

CORPORATE ADDRESS
Eicher Trucks & Buses
#96, Sector – 32, Gurgaon
122001, Haryana, India.

Caution: *Do not weld or drill on chassis frame. *Accessories, colours and features shown in pictures or elsewhere may not constitute standard fitment. *Weight mentioned is for standard configuration with standard body sizes and will change due to optional fitments. *As a result of continuous research and innovation carried out, specifications are merely indicative and are subject to change without notice.