

TRUCKS AND BUSES



PARTNERING PROSPERITY

# EXPERIENCE THE EXTREME.

Eicher Pro 8028XC

The 28 Tonne GVW Tipper



EUTECH 6



# EUTECH 6

Eicher is creating a new benchmark in the Indian commercial vehicle industry, with a revolutionary BSVI solution that combines global technology with innovative support services. This solution not only makes your vehicle BSVI compliant but also ensures higher productivity of the truck and profitability of your business.



## Euro VI Expertise for 6 years

VECV has been manufacturing and supplying base engines to the Volvo Group since 2013. Over 1,00,000 Euro VI base engines supplied, operating in 41 countries. First to roll-out BSVI CV range in India, incorporating expertise of Euro VI technology.



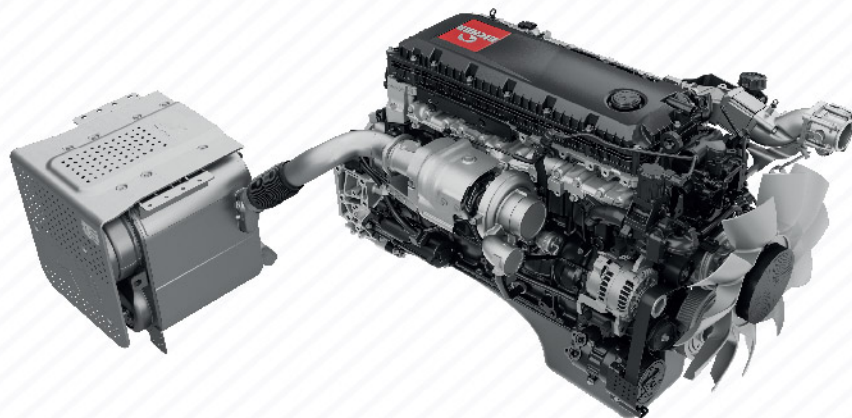
## Efficient EATS and engine technology

Best fluid economy: Lower fuel consumption + DEF consumption combined. Reliable EATS + engine technology tested for over 56,00,000 km. Duty cycle based SCR for high reliability & low maintenance.



## Enhanced UPTIME

Eicher Uptime Centre for 24x7 support by specialists. GPS enabled service vans just a phone call away. Remote diagnostics for quick repair of BSVI vehicles.



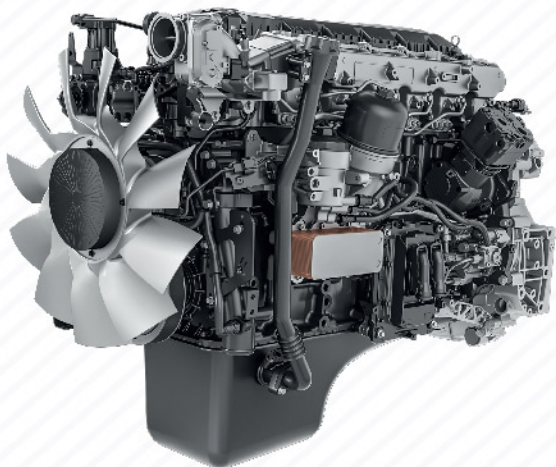
COMPACT BOX TYPE EATS FOR EFFICIENT THERMAL MANAGEMENT



The new Eicher Pro 8028XC is a heavy duty 28T GVW Tipper, designed to match the extreme demands in heavy construction applications. Built with the proven VEDX8 engine - delivering 300HP - and robust aggregates, Pro 8028XC is one of the most powerful Tipper in its class. **Experience the Extreme.**

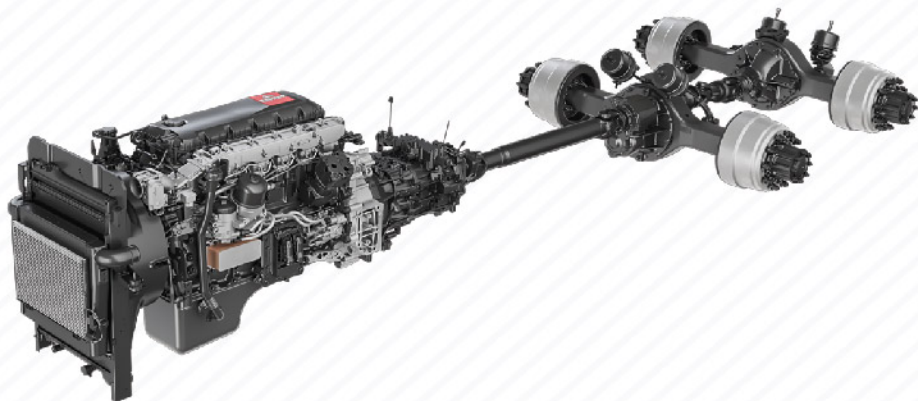






## More Tonnes Per Litre.

The new Eicher Pro 8028XC is built to deliver best in class fuel efficiency thereby reducing the overall operational costs in heavy construction applications. With the proven **VEDX8 engine** and Volvo Group's EMS, Pro 8028XC comes with a well synchronized driveline that ensures that you have the right torque throughout a wide range of rpm (1200-1600 rpm) resulting in superior performance and fuel efficiency. Volvo Group's Engine Management System provides precise and efficient fuel injection further enhancing the fuel efficiency.



## More Trips. Faster Turnaround

Pro 8028XC is built for maximum productivity in the toughest of terrains. With enhanced power and torque combination of 300 HP and 1200Nm, it offers **higher power to weight and higher torque to weight ratios** ensuring better pick-up and superior **gradeability** for faster turnaround delivering more trips.





## Superior Uptime.

Eicher Pro 8028XC is **designed and rigorously tested** for delivering high performance for moving loads with ease through rough terrains. Built on robust chassis with strong and rugged aggregates and features like engine brake, Engine Protection System, On-board diagnostics, Pro 8028XC is **built to last** longer. The fully equipped Eicher service network and on-site support model ensures Superior Uptime.



## More Comfort. Enhanced Safety.

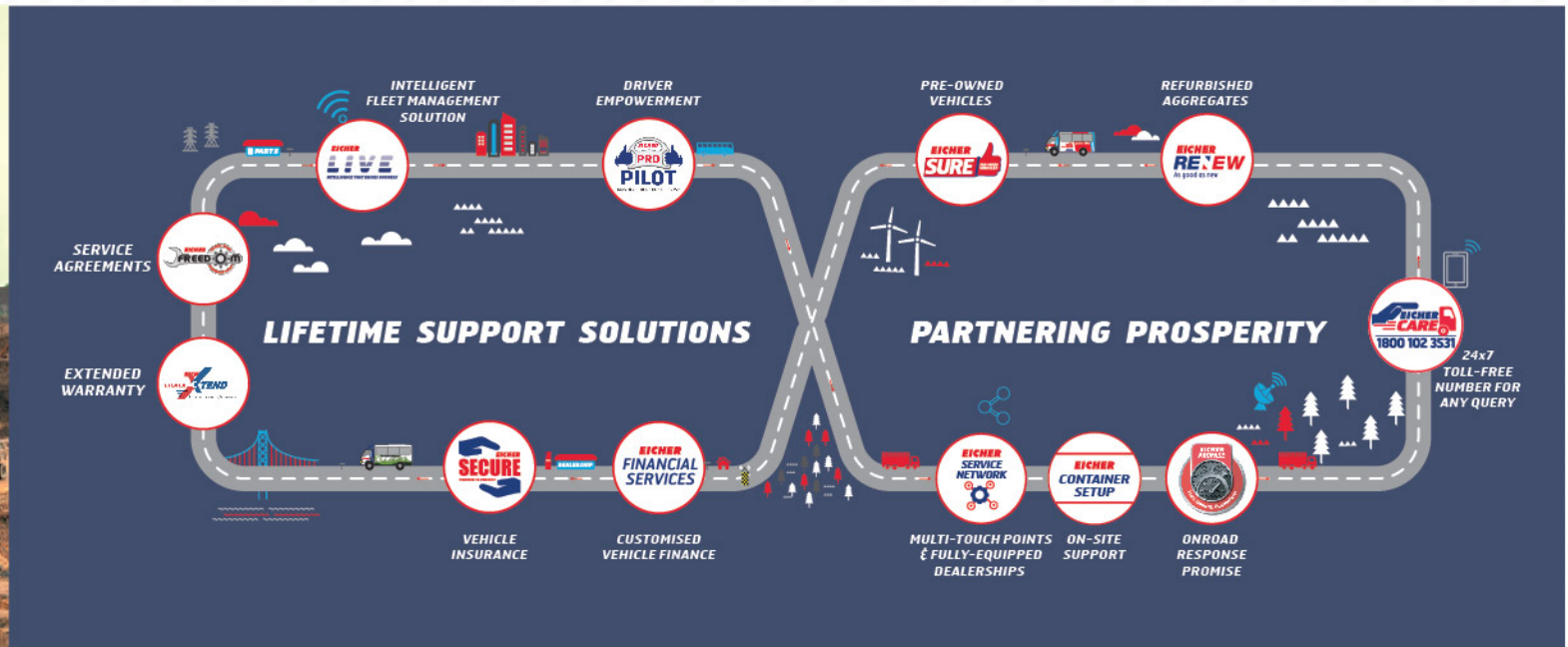
Trucks alone don't make profits, but along with the drivers they do. The global cab is designed keeping the driver comfort in mind for long working hours. The air conditioned cab is built with superior quality interiors, driver-friendly instrument panel, an ergonomic seat and a wide sleeper berth for stress-free driving and rest during breaks. The cabin also meets the stringent **European safety standards ECE R29** for cab strength test. Additionally, the DGMS compliant features and enhanced braking performance – assisted with Engine Brake, makes the Pro 8028XC safer than any Tipper in its category.





# Lifetime Support Solutions.

With our Lifetime Support Solutions, we ensure a seamless and hassle-free experience from the time you consider buying an Eicher vehicle to the time you think of selling it. Our continuously improving and holistic services will ensure higher uptime and productivity for your BSVI vehicles.



Eicher has taken a step towards achieving Superior Uptime with a responsive attitude, that will set us apart and create a differentiated experience for our customers. With our new Uptime Center and Uptime Certified Workshops, we are now geared up with a proactive support system for diagnostic assistance with advanced diagnostic tools.



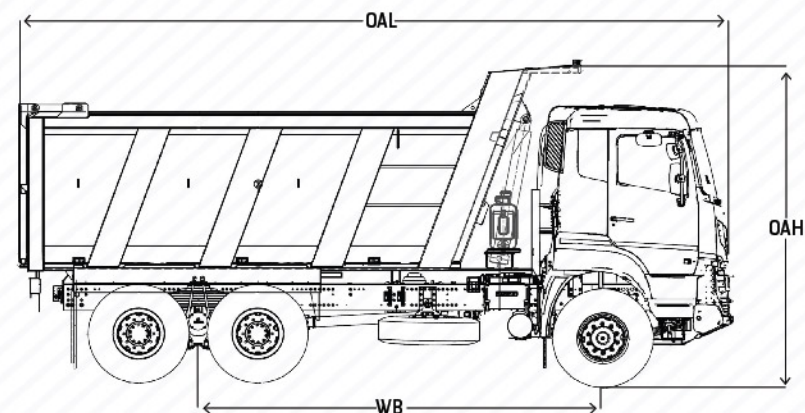
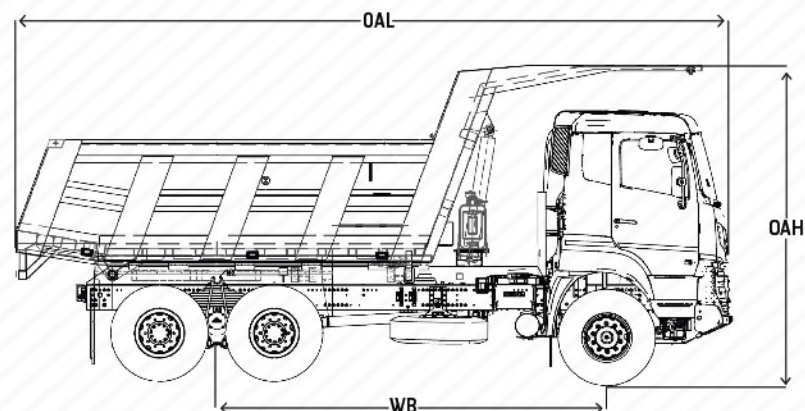
At Uptime Certified Workshops only  
\*T&C Apply





## Model Eicher Pro 8028XC

GVW (kg)	28000
Engine model	VEDX8, BS-VI
Max power	300HP @ 2200
Max torque	1200Nm @ 1200-1600 RPM
Clutch type & diameter	430mm, Pull Type, Single Dry Plate
Gearbox	ET140S9 - 1C + 8F + 1R
Front axle	Heavy-duty forged I-beam Reverse Elliot type axle with stabilizer bar
Rear axle	Heavy duty Single reduction tandem axle
Rear axle ratio	5.29
Differential lock	Inter-axle
Chassis dimension (mm)	300x90x8 with 5mm Full length inner liner
Front suspension	Parabolic spring assembly
Rear suspension	Bogie
Service brake	S-Cam Dual line with ABS
Parking brake	Pneumatically operated hand control valve
Wheel rims	7.5x20
Tyres	11x20 (Nylon, Mining Lug)
Steering type	Tilt and Telescopic Power steering
Cabin	AC Sleeper Cabin
Fuel tank (l)	315
DEF tank (l)	50
Electricals & battery	24V; 120AH
Wheelbase (mm)	4585
Minimum ground clearance (mm)	255
Turning circle diameter (m)	16.3
Gradeability (%)	68-Crawler gear
Body variants	14 Cum (Rock) 16 Cum (Box) 20 Cum (Box)



Vehicle Model	Wheelbase (WB) mm	Overall length (OAL) mm	Overall width (OAW) mm	Overall height (OAH) mm
Pro 8028XC (14 Cum Rock)	4585	8430	2584	3752
Pro 8028XC (20 Cum Box)	4585	8115	2562	3800



**VE COMMERCIAL VEHICLES**  
A VOLVO GROUP AND EICHER MOTORS JOINT VENTURE

eichertrucksandbuses.com, Eicher Care- 1800 102 3531

VE COMMERCIAL VEHICLES LTD.  
Registered Address – 3rd Floor Select Citywalk,  
A -3 District Centre, Saket, New Delhi 110 107, India  
CIN – U74900DL2008PLC175032

CORPORATE ADDRESS  
Eicher Trucks & Buses  
#96, Sector – 32, Gurgaon  
122001, Haryana, India

Caution: \*Do not weld or drill on chassis frame. \*Accessories and features shown in pictures or elsewhere may not constitute standard fitment. \*Weight mentioned is for standard configuration with standard body sizes and will change due to optional fitments. \*As a result of continuous research and innovation carried out, specifications are merely indicative and are subject to change without notice.