

TRUCKS AND BUSES



EXPERIENCE THE EXTREME.

Eicher Pro 8035XM
The 35 Tonne GVW Truck



 **EUTECH 6**



EUTECH 6

Eicher is creating a new benchmark in the Indian commercial vehicle industry, through a revolutionary BSVI solution that combines global technology with innovative support services. This solution not only makes your vehicle BSVI compliant but also ensures higher productivity of the truck and profitability of your business.



Euro VI Expertise for 6 years

VECV has been manufacturing and supplying base engines to the Volvo Group since 2013. Over 1,00,000 Euro VI base engines supplied, operating in 41 countries. First to roll out BSVI CV range in India, incorporating expertise of Euro VI technology.



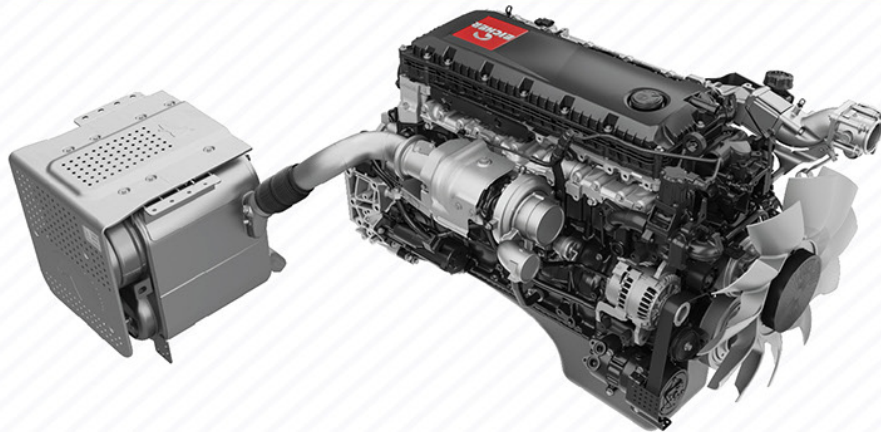
Efficient EATS and engine technology

Best fluid economy: Lower fuel consumption + DEF consumption combined. Reliable EATS + engine technology tested for over 56,00,000 km. Duty cycle based SCR for high reliability & low maintenance.



Enhanced UPTIME

Eicher Uptime Centre for 24x7 support by specialists. GPS enabled service vans just a phone call away. Remote diagnostics for quick repair of BSVI vehicles.



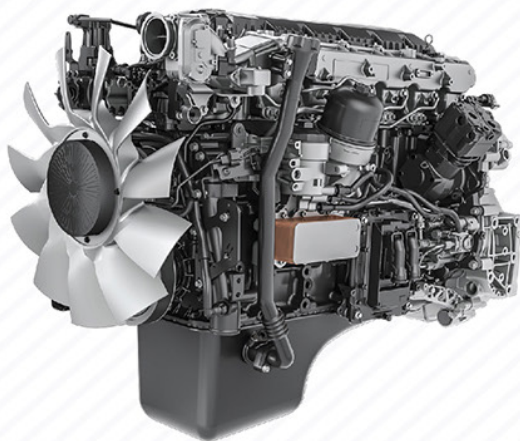
COMPACT BOX TYPE EATS FOR EFFICIENT THERMAL MANAGEMENT



The new Eicher Pro 8035XM, the 35T GVW heavy duty Mining Tipper, is designed to perform in the most extreme and challenging environment. Powered with the proven VEDX8 engine, delivering a staggering 350 hp and built with robust aggregates, Eicher Pro 8035XM will further push the limits of productivity and reliability.

Experience the Extreme.

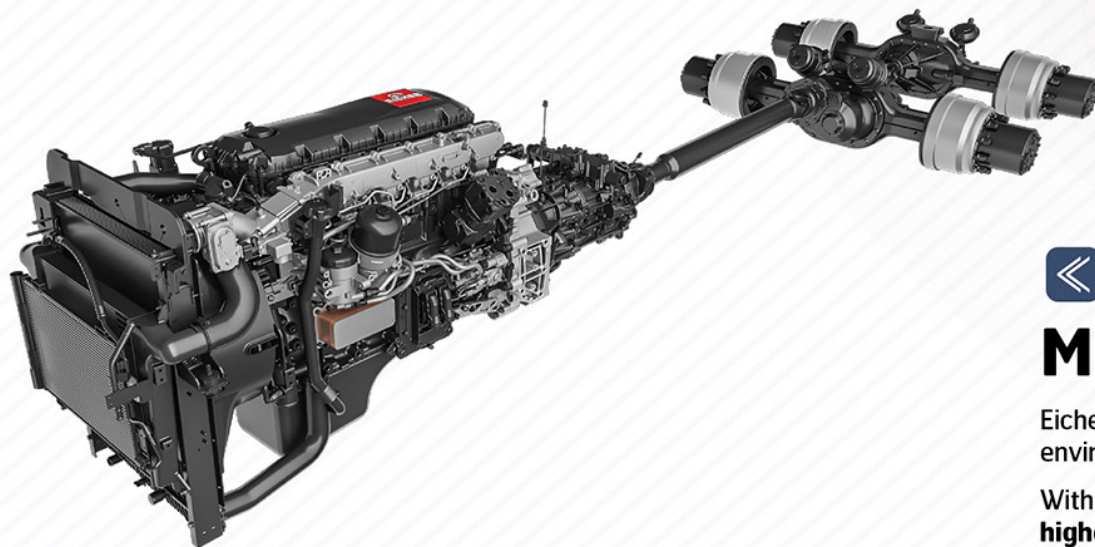




More Tonnes Per Litre.

Fuel efficiency is one of the key parameters in mining operations. Eicher Pro 8035XM comes with a well synchronized driveline that ensures that you have the right torque through a wide range of rpm (1200-1600 rpm) resulting in superior performance and fuel efficiency.

Volvo Group's Engine Management System provides precise and efficient fuel injection, ensuring your truck makes the most out of every drop of the fuel.



More Trips. Faster Turnaround.

Eicher Pro 8035XM is made to deliver maximum productivity in the most challenging environments.

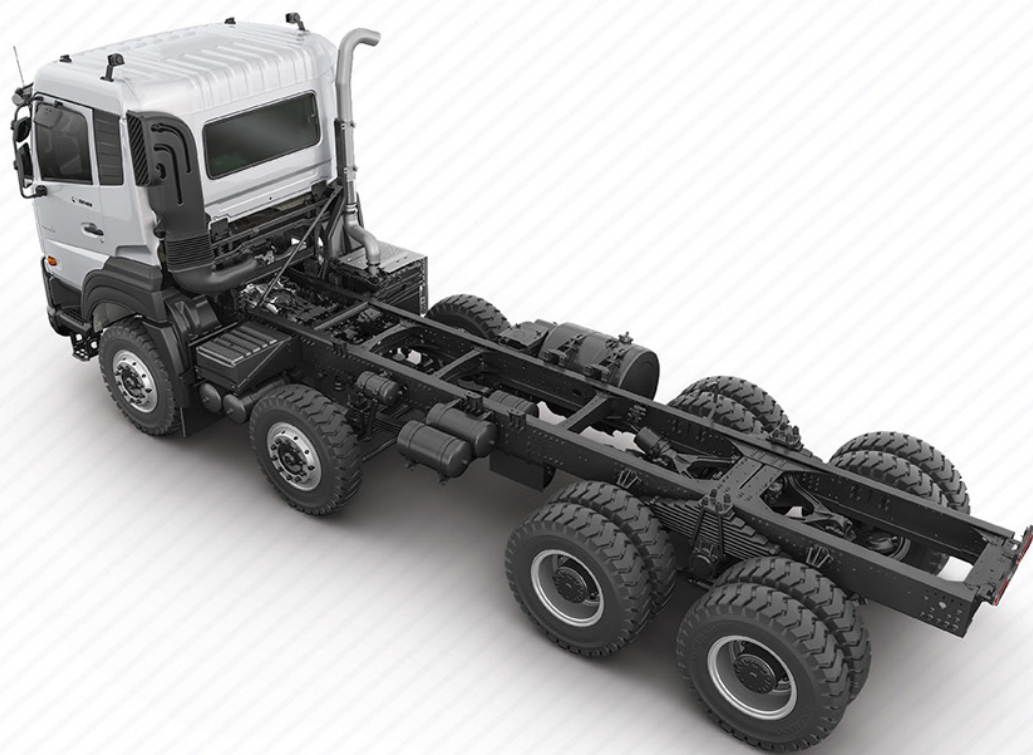
With enhanced power and torque combination of 350 hp and 1350 Nm, it offers **higher power to weight and higher torque to weight ratios** ensuring better pick-up and superior **gradeability** for faster turnaround, and delivering more trips.

Superior Uptime.

Mining throws numerous challenges round the clock, where both men & machines get pushed to their extreme limits. Eicher Pro 8035XM is **designed and rigorously tested** for delivering high performance.

Built on robust chassis with strong and rugged aggregates and features like engine brake, Engine Protection System, On-board diagnostics, Eicher Pro 8035XM is **built to last** longer.

The fully equipped Eicher service network and on-site support model ensures Superior Uptime.



More Comfort. Enhanced Safety.

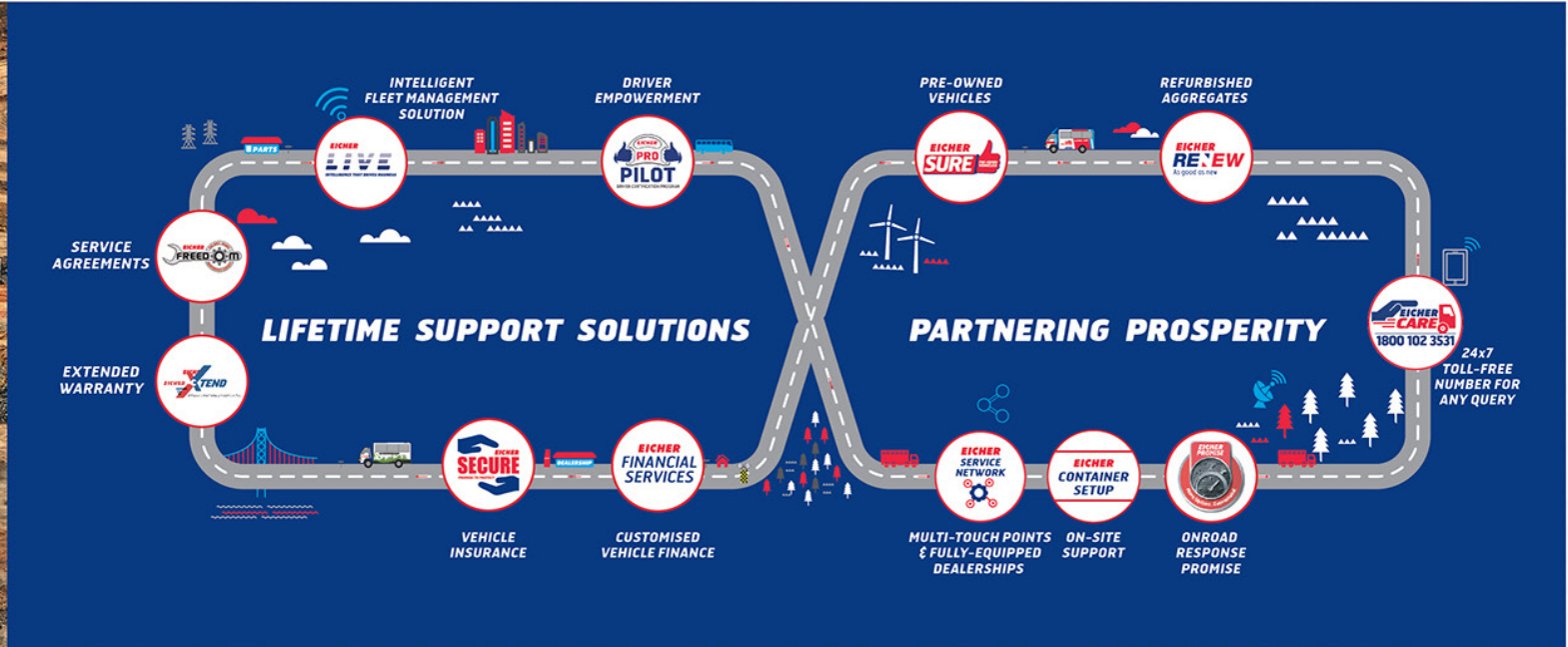
When it comes to profits, not just trucks, even their drivers matter. The **global** cabin is designed keeping the driver comfort in mind for long working hours. The air conditioned cabin is built with superior quality interiors, driver-friendly instrument panel, an ergonomic seat and a wide sleeper berth for stress-free driving and to rest during breaks.

The cabin also meets the stringent **European safety standards ECE R29** for cabin strength test. Additionally, the DGMS compliant features and enhanced braking performance, assisted with Engine Brake, makes Eicher Pro 8035XM safer than any other tipper in the category.



Lifetime Support Solutions.

With our Lifetime Support Solutions, we ensure a seamless and hassle-free experience from the time you consider buying an Eicher vehicle to the time you think of selling it. Our continuously improving and holistic services will ensure higher uptime and productivity for your BSVI vehicles.



Eicher has taken a step towards achieving Superior Uptime with a responsive attitude, that will set us apart and create a differentiated experience for our customers. With our new Uptime Center and Uptime Certified Workshops, we are now geared up with a proactive support system for diagnostic assistance with advanced diagnostic tools.

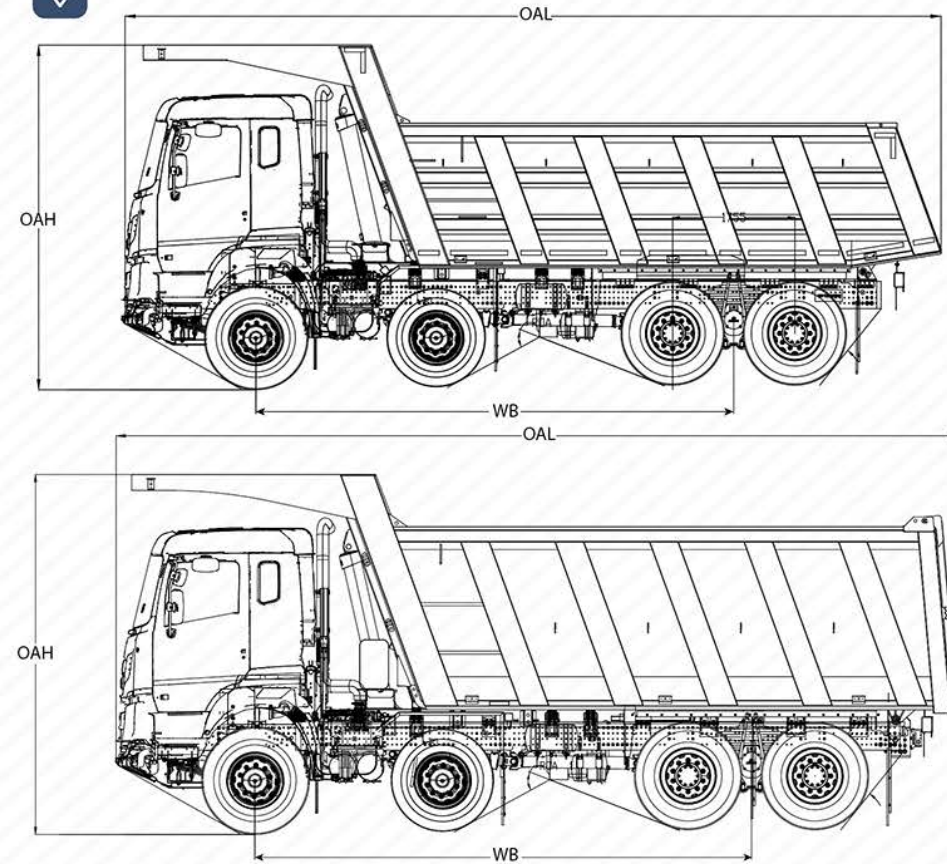


At Uptime Certified Workshops only
*T&C Apply



Model Eicher Pro 8035XM

GVW (Kg)	35000
Engine model	VEDX8, BSVI
Max power	350 hp @ 2200 rpm
Max torque	1350 Nm @ 1200-1600 rpm
Clutch type & diameter	430 mm, pull type, single dry plate
Gearbox	ET140S9 - 1C + 8F + 1R
Front axle	Heavy-duty forged I-beam, Reverse Elliot type axle with stabilizer bar
Rear axle	Hub reduction tandem axle with two stage differential lock
Rear axle ratio	6.37
Chassis dimension	(300 x 90 x 8) mm with 5 mm full length inner liner
Front suspension	Parabolic
Rear suspension	Bogie
Service brake	S-Cam Dual line with ABS
Parking brake	Pneumatically operated hand control valve
Wheel rims	8.5x20
Tyres	12x20 Mining Lug
Steering type	Tilt and telescopic power steering
Cabin	AC sleeper cabin
Fuel tank (l)	315
DEF tank (l)	50
Electricals & battery	24 V; 120 Ah
Wheelbase (mm)	5285
Minimum ground clearance (mm)	308
Turning circle diameter (m)	21.1
Gradeability (%)	75-Crawler gear
Body variants	16 Cum & 18 Cum Rock 20 Cum & 23 Cum Box
Standard features	Eicher Live, Fuel Coaching, Cruise Control, Mbooster+, DGMS



Vehicle Model	Wheelbase (WB) mm	Overall length (OAL) mm	Overall width (OAW) mm	Overall height (OAH) mm
Pro 8035XM (18 Cum Rock)	5285	9090	2580	3752
Pro 8035XM (23 Cum Box)	5285	8925	2590	3752

